

LPN TRANSFER NURSING PROGRAM MAP

ASSOCIATE'S DEGREE IN NURSING (ADN)



Registered nurses in the state of Iowa can expect solid wages and rapid job growth, and nursing is considered a Bright Outlook occupation by O*NET. See an advisor to learn more.

► PRE-RN PREREQUISITES *(May not take any class more than twice)*

Prior to enrolling, meet with LPN transfer advisor to register for classes	General education classes are required and listed on the back.									
		State Licence Decision**	Register	Laptop & scrubs	See advisor HSC-189 Orientation	Background check & compliance package	Register	Submit checklist	Acceptance dates for enrollment: June 1 - July 1	
PLANNING					TERM 1			TERM 2		
					◆ HSC-189 INTRODUCTION TO NURSING	4	◆ PNN-282 PHARMACOLOGY II	2		
					◆ PNN-280 PHARMACOLOGY I	2	◆ PNN-280 HEALTH ASSESSMENT	3		
					TOTAL CREDITS	6	TOTAL CREDITS	5		

► TECHNICAL PROGRAM *(Required admission GPA: 2.75LPN program begins only in the Fall semester.)*

LPN Transfer Orientation									
	Register		Register		Register	Apply for graduation			RN boards
TERM 1		TERM 2		TERM 3		TERM 4			
◆ ADN-176 ADVANCED CONCEPTS OF MENTAL HEALTH	4	◆ ADN-171 CONCEPTS OF NURSING	5	◆ ADN-183 ADVANCED CONCEPTS IN OB/PEDS	4	◆ ADN-180 ADVANCED CONCEPTS OF NURSING	4	◆ ADN-760 ADVANCED CONCEPTS CLINICAL	4
TOTAL CREDITS	4	◆ ADN-740 CONCEPTS CLINICAL	3	TOTAL CREDITS	4	TOTAL CREDITS	8		
		TOTAL CREDITS	8			TOTAL CREDITS	8		

◆ = "Critical Courses" require minimum B- grade. GPA of 2.75 in prereqs with minimum C grade in each course. May take each prerequisite course only twice. Prereqs for HSC-189 are ENG-105, A&P I, LPN.

***Math placement - one of the following is required:**

- ALEKS algebra score ≥ 30
- ACT math score of ≥ 19
- College-level math course equivalency
- Earned A.A. or bachelors degree

****State License Decision:**

If you are planning to work outside of the state of Iowa, please meet with the Dean of Nursing, to make sure you are familiar with Nursing licensure requirements of that particular state.



Plan your suggested schedule of courses with MyHub.
www.kirkwood.edu/myhub

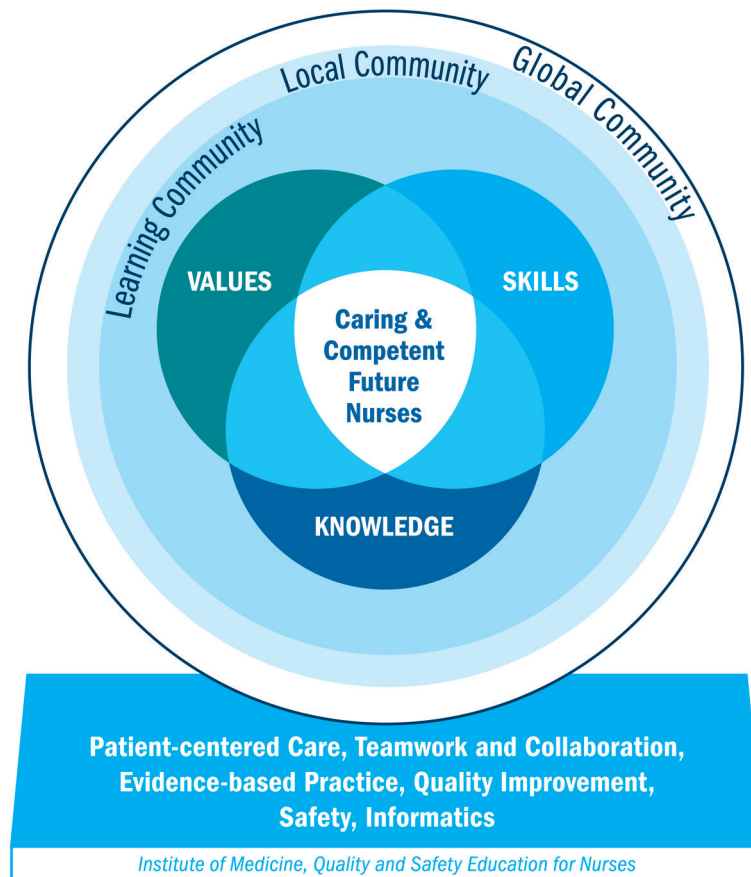
NURSING PROGRAM

▶ PREREQUISITES

These 11 classes must be completed before starting the ADN classes.

BIO-151 NUTRITION	3	SOC-110 INTRODUCTION TO SOCIOLOGY	3	SPC-101 FUNDAMENTALS OF ORAL COMMUNICATION	3
PSY-111 INTRODUCTION TO PSYCHOLOGY	3	PSY-121 DEVELOPMENTAL PSYCHOLOGY	3	BIO-186 MICROBIOLOGY W/ LAB	4
ENG-105 COMPOSITION I	3	XXX-XXX HUMANITIES ELECTIVE	3		
◆ BIO-168 HUMAN A&P I W/ LAB*	4	◆ BIO-173 HUMAN A&P II W/ LAB*	4		

*Taken within 5 years of starting technical program.



KIRKWOOD NURSING DEPARTMENT MISSION

Guiding, advising, and educating caring, competent nurses for the future!

KIRKWOOD NURSING PROGRAM OUTCOMES

The Kirkwood Nursing program graduate will achieve the following competencies:

- Patient-centered Care
- Teamwork
- Evidence-based Practice
- Quality Improvement
- Safety
- Informatics
- Leadership
- Professionalism