

NURSING PROGRAM MAP

DIPLOMA IN NURSING (LPN)



Licensed practical nurses in the state of Iowa can expect solid wages and rapid job growth, and nursing is considered a Bright Outlook occupation by O*NET. See an advisor to learn more.

► PREREQUISITES *(May not take more than twice.)*

TERM 1		TERM 2	
<p><u>New student orientation</u></p> <p><u>Attend program conference prior to registration</u></p> <p><u>Obtain CNA or HSP</u></p> <p><u>State Licence Decision**</u></p>	<p><u>TOEFL (International students)</u></p> <p><u>Register</u></p>	<p><u>See advisor HSC-189 Orientation</u></p> <p><u>Submit program conference sheet</u></p> <p><u>Register</u></p> <p><u>Laptop & scrubs</u></p> <p><u>Background check & compliance package</u></p>	
BIO-151 NUTRITION	3	PSY-121 DEVELOPMENTAL PSYCHOLOGY	3
PSY-111 INTRODUCTION TO PSYCHOLOGY	3	◆ BIO-173 HUMAN A&P II W/ LAB	4
ENG-105 COMPOSITION I	3	◆ HSC-189 INTRODUCTION TO NURSING	4
◆ BIO-168 HUMAN A&P I W/ LAB	4	TOTAL CREDITS	11
TOTAL CREDITS	13		

► TECHNICAL PROGRAM *(Required admission GPA: 2.75. Program slots are limited and competitive.)*

TERM 1		TERM 2	
<p><u>FAFSA</u></p> <p><u>PNN-228 Orientation</u></p>	<p><u>Register</u></p>	<p><u>Apply for graduation</u></p>	<p><u>LPN boards</u></p>
◆ PNN-228 FOUNDATIONS I	6	◆ PNN-229 FOUNDATIONS II	4
◆ PNN-721 FOUNDATIONS I CLINICAL	2	◆ PNN-723 FOUNDATIONS II CLINICAL	2
◆ PNN-293 HEALTH ASSESSMENT	3	◆ PNN-446 CARE OF THE GROWING FAMILY	4
◆ PNN-280 PHARMACOLOGY I	2	◆ PNN-282 PHARMACOLOGY II	2
TOTAL CREDITS	13	TOTAL CREDITS	12

◆ = "Critical Courses" require minimum B- grade. GPA of 2.75 in prereqs with minimum C grade in each course. May take each prerequisite course only twice.
Prereqs for HSC-189 are ENG-105, A&P I, CNA or HSP, and program conference.

***Math placement - one of the following is required:**

- ALEKS algebra score ≥ 30
- ACT math score of ≥ 19
- College-level math course equivalency
- Earned A.A. or bachelors degree

****State License Decision:**

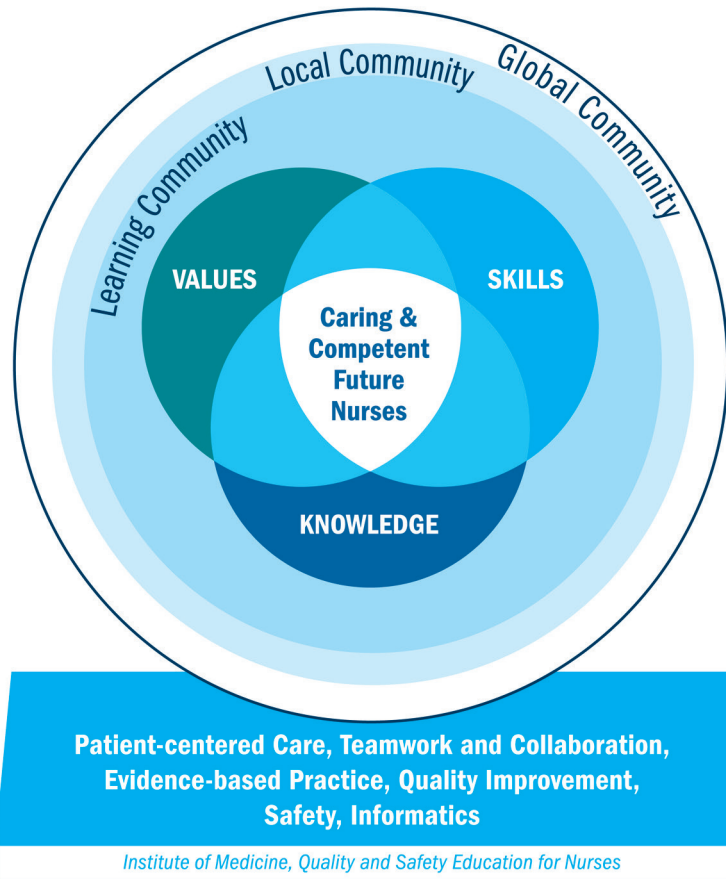
If you are planning to work outside of the state of Iowa, please meet with the Dean of Nursing, to make sure you are familiar with Nursing licensure requirements of that particular state.



Plan your suggested schedule of courses with MyHub.

www.kirkwood.edu/myhub

Plan of Study



KIRKWOOD NURSING DEPARTMENT MISSION

Guiding, advising, and educating caring, competent nurses for the future!

KIRKWOOD NURSING PROGRAM OUTCOMES

The Kirkwood Nursing program graduate will achieve the following competencies:

- Patient-centered Care
 - Teamwork
 - Evidence-based Practice
 - Quality Improvement
 - Safety
 - Informatics
 - Leadership
 - Professionalism
-