

NURSING PROGRAM MAP

ASSOCIATE'S DEGREE IN NURSING (ADN)

Registered nurses in the state of Iowa can expect solid wages and rapid job growth, and nursing is considered a Bright Outlook occupation by O*NET. See an advisor to learn more.



► PREREQUISITES *(May not take more than twice.)*

TERM 1	TERM 2	TERM 3
<p><u>New student orientation</u></p> <p><u>Attend program conference prior to registration</u></p> <p><u>Register</u></p> <p><u>Obtain CNA or HSP</u></p> <p><u>See advisor</u></p>	<p><u>TOEFL (International students)</u></p> <p><u>Register</u></p> <p><u>State Licence Decision**</u></p>	<p><u>See advisor HSC-189 Orientation</u></p> <p><u>Laptop & scrubs</u></p> <p><u>Submit program conference sheet</u></p> <p><u>Background check & compliance package</u></p> <p><u>Register</u></p>
<p>BIO-151 NUTRITION 3</p> <p>PSY-111 INTRODUCTION TO PSYCHOLOGY 3</p> <p>ENG-105 COMPOSITION I 3</p> <p>◆ BIO-168 HUMAN A&P I W/ LAB 4</p> <p>TOTAL CREDITS 13</p>	<p>SOC-110 INTRODUCTION TO SOCIOLOGY 3</p> <p>PSY-121 DEVELOPMENTAL PSYCHOLOGY 3</p> <p>XXX-XXX HUMANITIES ELECTIVE 3</p> <p>◆ BIO-173 HUMAN A&P II W/ LAB 4</p> <p>TOTAL CREDITS 13</p>	<p>SPC-101 FUNDAMENTALS OF ORAL COMMUNICATION 3</p> <p>BIO-186 MICROBIOLOGY W/ LAB 4</p> <p>◆ HSC-189 INTRODUCTION TO NURSING 4</p> <p>TOTAL CREDITS 11</p>

► TECHNICAL PROGRAM *(Required admission GPA: 2.75. Program slots are limited and competitive.)*

TERM 1	TERM 2	TERM 3	TERM 4
<p><u>FAFSA</u></p> <p><u>PNN-228 Orientation</u></p> <p><u>Register</u></p>	<p><u>Register</u></p>	<p><u>LPN boards</u></p> <p><u>Register</u></p>	<p><u>Apply for graduation</u></p> <p><u>RN boards</u></p>
<p>◆ PNN-228 FOUNDATIONS I 6</p> <p>◆ PNN-721 FOUNDATIONS I CLINICAL 2</p> <p>◆ PNN-293 HEALTH ASSESSMENT 3</p> <p>◆ PNN-280 PHARMACOLOGY I 2</p> <p>TOTAL CREDITS 13</p>	<p>◆ PNN-229 FOUNDATIONS II 4</p> <p>◆ PNN-723 FOUNDATIONS II CLINICAL 2</p> <p>◆ PNN-446 CARE OF THE GROWING FAMILY 4</p> <p>◆ PNN-282 PHARMACOLOGY II 2</p> <p>TOTAL CREDITS 12</p>	<p>◆ ADN-171 CONCEPTS OF NURSING 5</p> <p>◆ ADN-740 CONCEPTS CLINICAL 3</p> <p>◆ ADN-176 ADVANCED CONCEPTS OF MENTAL HEALTH 4</p> <p>TOTAL CREDITS 12</p>	<p>◆ ADN-180 ADVANCED CONCEPTS OF NURSING 4</p> <p>◆ ADN-760 ADVANCED CONCEPTS CLINICAL 4</p> <p>◆ ADN-183 ADVANCED CONCEPTS IN OB/PEDS 4</p> <p>TOTAL CREDITS 12</p>

◆ = "Critical Courses" require minimum B- grade. GPA of 2.75 in prereqs with minimum C grade in each course. May take each prerequisite course only twice. Prereqs for HSC-189 are ENG-105, A&P I, CNA or HSP, and program conference.

***Math placement - one of the following is required:**

- ALEKS algebra score ≥ 30
- ACT math score of ≥ 19
- College-level math course equivalency
- Earned A.A. or bachelors degree

****State License Decision:**

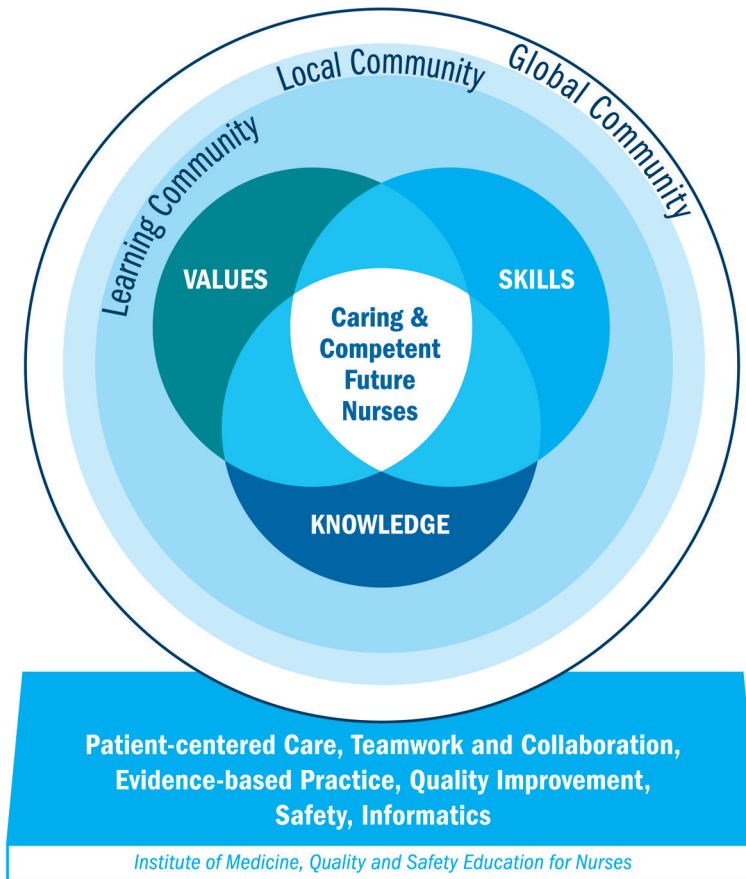
If you are planning to work outside of the state of Iowa, please meet with the Dean of Nursing, to make sure you are familiar with Nursing licensure requirements of that particular state.



Plan your suggested schedule of courses with MyHub.

www.kirkwood.edu/myhub

Plan of Study



KIRKWOOD NURSING DEPARTMENT MISSION

Guiding, advising, and educating caring, competent nurses for the future!

KIRKWOOD NURSING PROGRAM OUTCOMES

The Kirkwood Nursing program graduate will achieve the following competencies:

- Patient-centered Care
 - Teamwork
 - Evidence-based Practice
 - Quality Improvement
 - Safety
 - Informatics
 - Leadership
 - Professionalism
-