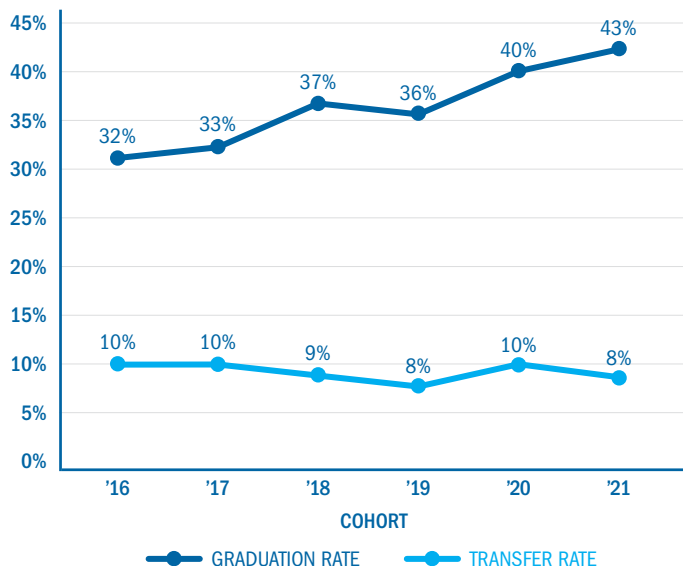


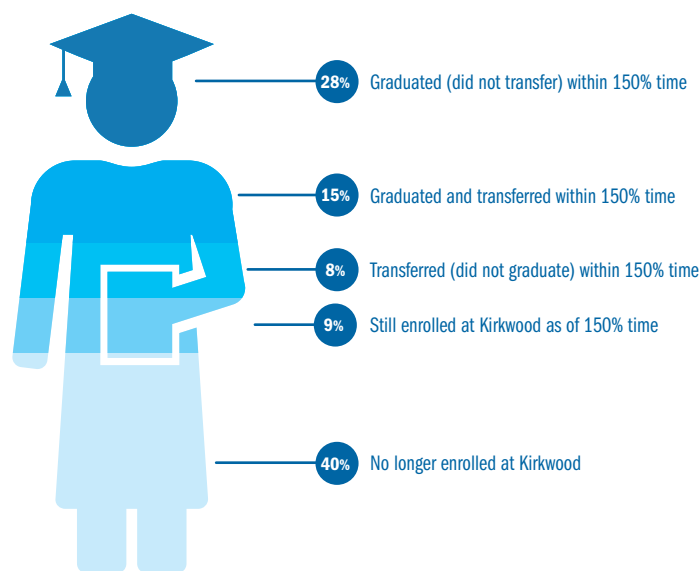
Graduation & Transfer

Based on IPEDS 2024 – '25 Reporting Year Information
and [2024 IPEDS Data Feedback Report](#)

KIRKWOOD 150% GRADUATION AND TRANSFER RATES



2021 COHORT: WHERE ARE THEY WITHIN 150% TIME?

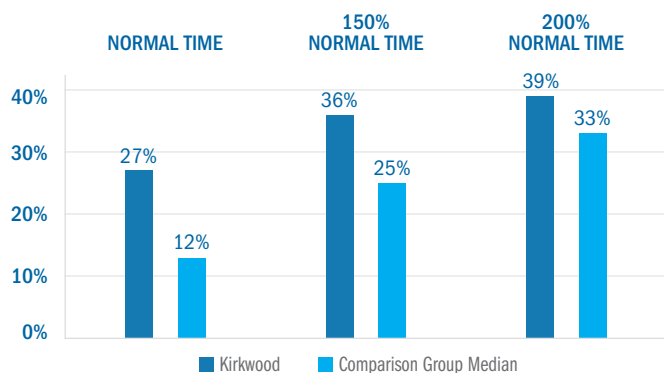


TOTAL = 1,646

HOW DO WE COMPARE TO OUR PEERS?

IPEDS COMPARISON GROUP: TIME TO COMPLETION

BASED ON 2019 COHORT



DEFINITIONS

BASED ON INTEGRATED POSTSECONDARY EDUCATION DATA SYSTEM
(IPEDS) FEDERAL REPORTING SYSTEM

150% NORMAL TIME: 150% of expected time of completion. Example: 150% of expected time to completion for an associate degree is three years.

COHORT: First-time degree-seeking/certificate-seeking undergraduate students who started in the specified fall semester.

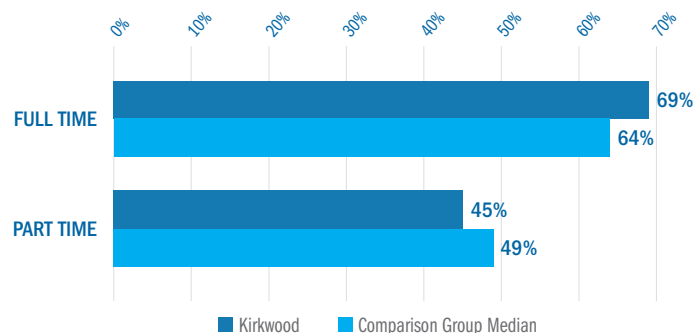
TRANSFER: Subsequent enrollment at a 4-year postsecondary institution without graduating from Kirkwood.

RETENTION: A measure of the rate at which students persist in their educational program at an institution, expressed as a percentage. This is a percentage of cohort students from the previous fall who were still enrolled or successfully completed their program by the current fall.

FALL-TO-FALL RETENTION RATES FOR COHORT STUDENTS

EARLY INDICATOR OF STUDENT SUCCESS

BASED ON 2022 COHORT



Contact Institutional Research for the IPEDS Graduation 150% Data report at IR@kirkwood.edu.

IR Note: IPEDS 2024 Data Feedback Report available at www.kirkwood.edu/ir