

# How to Find and install Print Drivers

1. Detailed instructions can be found at:

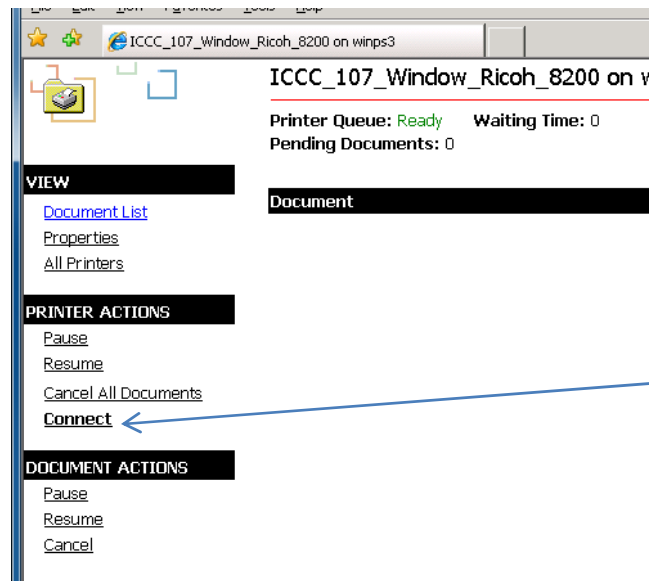
<http://www.kirkwood.edu/site/index.php?p=21163>

1. Open internet explorer and type in:  
IN IOWA CITY: [HTTP://winps3/printers](http://winps3/printers)  
Everywhere Else: [HTTP://winps2/printers](http://winps2/printers)
2. Browse through the list to find your printer and click on the printer
  - a. Please note the list only shows 10 printers at a time
  - b. Once you have found your printer, click on the printer
3. This will bring up a new screen and on the left, click on “connect”

## All Printers on winps3

Name	Status	Location	Jobs
<a href="#">ICCC_102 Ricoh_4100</a>	Ready	ICCC	0
<a href="#">ICCC_103 Ricoh_SP312dn</a>	Ready	ICCC_103_Ricoh_SP312dn	0
<a href="#">ICCC_105 Ricoh_205</a>	Ready	ICCC	0
<a href="#">ICCC_106 Ricoh_4100</a>	Ready	ICCC_106_Ricoh_4100	0
<a href="#">ICCC_107 Door Ricoh_8200</a>	Ready	Nearest Door	0
<a href="#">ICCC_107 Window Ricoh_8200</a>	Ready	Nearest Window	0
<a href="#">ICCC_109 Ricoh_4100</a>	Ready	ICCC_109_Ricoh_4100	0
<a href="#">ICCC_110 Ricoh_4100</a>	Ready	ICCC	0
<a href="#">ICCC_112 Ricoh_4500</a>	Ready	ICCC	0
<a href="#">ICCC_112 Ricoh_8000</a>	Ready	ICCC_112_Ricoh_8000	0

[Next 10 printers](#)



4. After you click on “Connect”, Confirm to install, click “Yes”

