



2017 - 2018 Fiscal Year Effectiveness Profile Report

Culinary Arts - CIP: 12.0503

This report contains credit course and program data as it relates to enrollment, academic achievement, graduation and transfer (where appropriate), employment, and resources for **Culinary Arts**. Academic Affairs and Institutional Research distributes this information annually to faculty, staff, administration, and other stakeholders in support of their continuous improvement dialogues. It is expected that this information can serve as a starting point for designing further investigations, research, professional development, and/or grant seeking. For deeper interpretation beyond these descriptive statistics and/or more sophisticated research, please contact the Director of Institutional Research, Kirkwood Community College, 6301 Kirkwood Blvd. SW, Cedar Rapids, Iowa, 52406, 319-398-7116.

Educational Opportunities

This profile report has been constructed from data related to the following:

Division: Hospitality Arts

Department: Culinary Arts

Program: Culinary Arts

<u>Awards</u>		<u>SOCs</u>	
CULAR.AAS	Culinary Arts - AAS	11-1021.00	General and Operations Managers
FOODS.DP	Food Service Assistant - Diploma	11-3061.00	Purchasing Managers
		11-9051.00	Food Service Managers
<u>Courses</u>		35-1011.00	Chefs and Head Cooks
FLS-118	Spanish for Prof: Hospitality	35-1012.00	First-Line Supervisors of Food Preparation and Serving Workers
HCM-100	Sanitation & Safety	35-2012.00	Cooks, Institution and Cafeteria
HCM-109	Kitchen Essentials	35-2013.00	Cooks, Private Household
HCM-130	Plated Desserts	35-2014.00	Cooks, Restaurant
HCM-138	Food Fundamentals	35-2015.00	Cooks, Short Order
HCM-140	Fabrication	35-2021.00	Food Preparation Workers
HCM-147	Culinary Techniques	41-4011.00	Sales Representatives, Wholesale and Manufacturing, Technical and Scientific Products
HCM-161	Stocks and Sauces	43-3061.00	Procurement Clerks
HCM-166	Culinary Arts	51-3011.00	Bakers
HCM-181	International Cuisine	51-3021.00	Butchers and Meat Cutters
HCM-227	Menu Planning	51-3092.00	Food Batchmakers
HCM-231	Nutrition		
HCM-251	Purchasing, Recv & Inventory		
HCM-260	Hospitality Math		
HCM-269	Garde Manger (lab/lec)		
HCM-273	Advanced Garde Manger		
HCM-279	Hospitality Accounting		
HCM-288	Intro to Hospitality II		
HCM-315	Wine, Beer and Spirits Basics		
HCM-321	Intro to Hospitality Industry		



2017 - 2018 Fiscal Year Effectiveness Profile Report

Culinary Arts - CIP: 12.0503

HCM-324	College Orientation
HCM-330	Hospitality Personnel Mgmt
HCM-342	Hosp Events & Catering (BOH)
HCM-402	Culinary Competition
HCM-404	Culinary Travel Studies
HCM-530	Culinary Capstone
HCM-928	Independent Study



2017 - 2018 Fiscal Year Effectiveness Profile Report

Culinary Arts - CIP: 12.0503

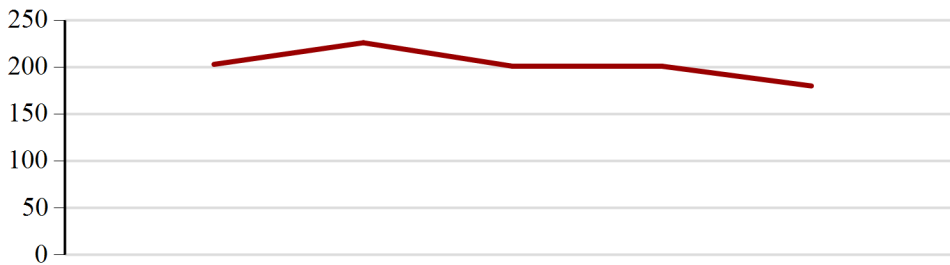
Enrollment (Based on Student Program in MIS Reporting)

Fiscal Year Enrollment

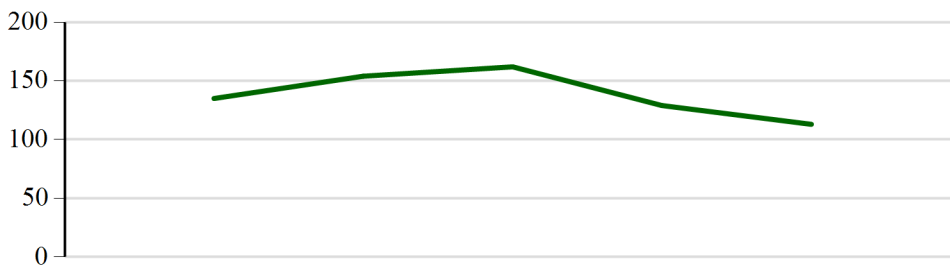
Unduplicated Credit Cohort Headcount



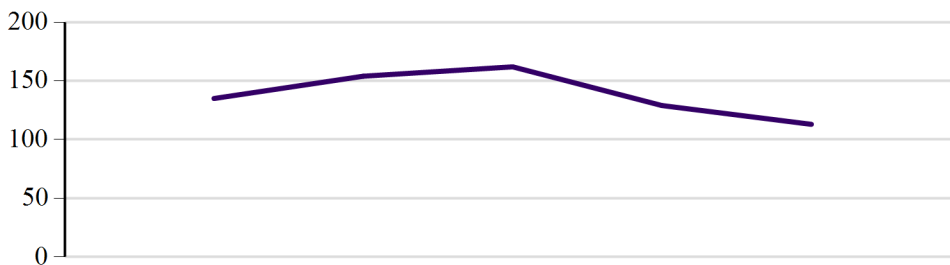
	2013 - 2014	2014 - 2015	2015 - 2016	2016 - 2017	2017 - 2018
■ Institution	19,497	18,544	18,485	18,110	17,723



	2013 - 2014	2014 - 2015	2015 - 2016	2016 - 2017	2017 - 2018
■ Division	203	226	201	201	180



	2013 - 2014	2014 - 2015	2015 - 2016	2016 - 2017	2017 - 2018
■ Department	135	154	162	129	113



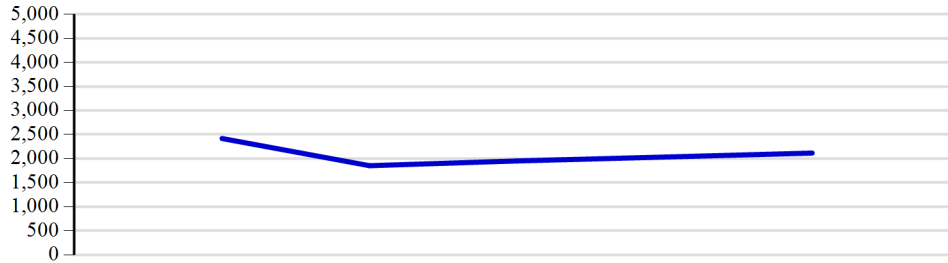
	2013 - 2014	2014 - 2015	2015 - 2016	2016 - 2017	2017 - 2018
■ Program	135	154	162	129	113



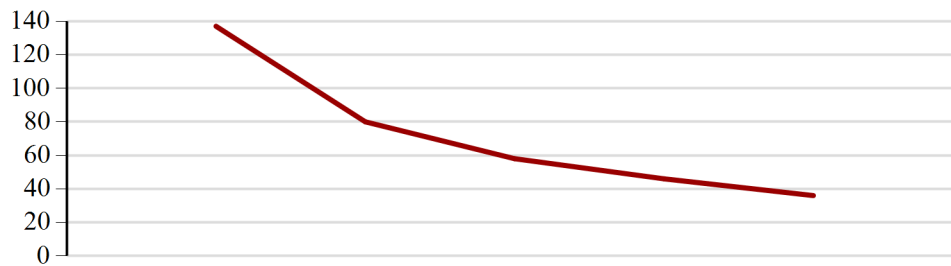
2017 - 2018 Fiscal Year Effectiveness Profile Report

Culinary Arts - CIP: 12.0503

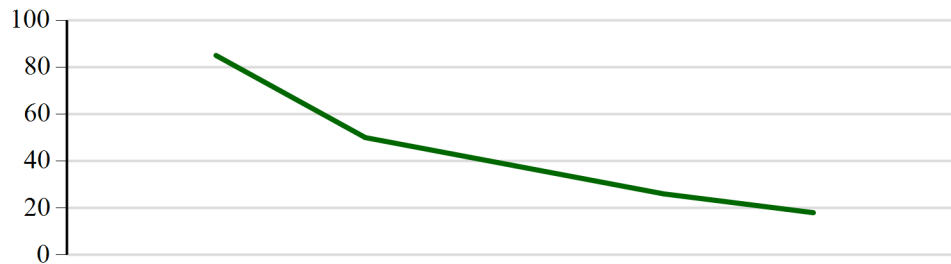
Unduplicated Credit Non-Cohort Headcount



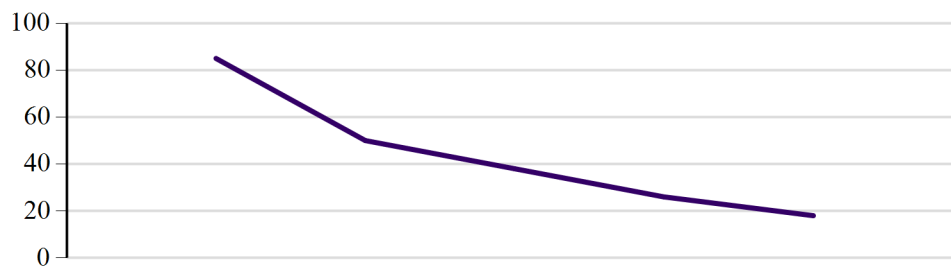
	2013 - 2014	2014 - 2015	2015 - 2016	2016 - 2017	2017 - 2018
Institution	2,419	1,854	1,953	2,034	2,116



	2013 - 2014	2014 - 2015	2015 - 2016	2016 - 2017	2017 - 2018
Division	137	80	58	46	36



	2013 - 2014	2014 - 2015	2015 - 2016	2016 - 2017	2017 - 2018
Department	85	50	38	26	18



	2013 - 2014	2014 - 2015	2015 - 2016	2016 - 2017	2017 - 2018
Program	85	50	38	26	18

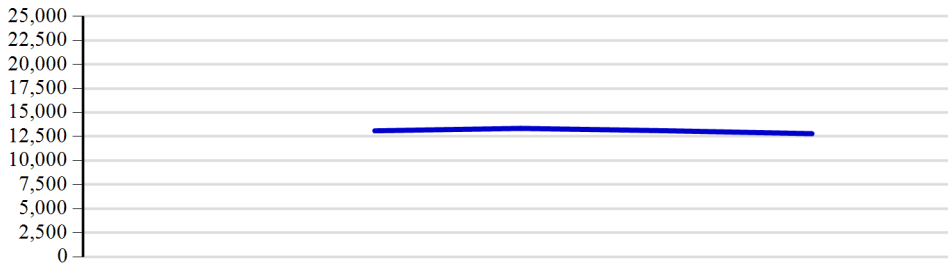


2017 - 2018 Fiscal Year Effectiveness Profile Report

Culinary Arts - CIP: 12.0503

Fall Enrollment

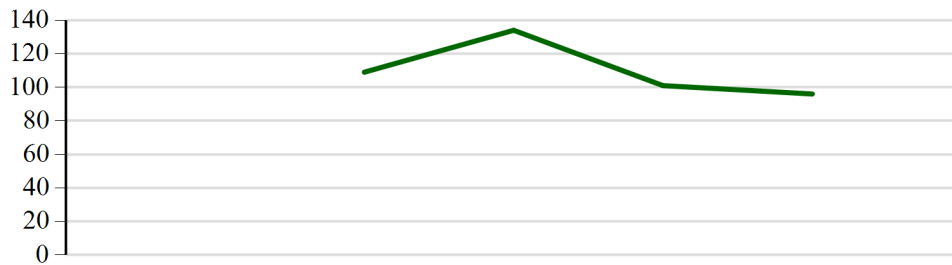
Unduplicated Credit Cohort Headcount



	2013 - 2014	2014 - 2015	2015 - 2016	2016 - 2017	2017 - 2018
Institution		13,100	13,353	13,106	12,800



	2013 - 2014	2014 - 2015	2015 - 2016	2016 - 2017	2017 - 2018
Division		159	209	167	153



	2013 - 2014	2014 - 2015	2015 - 2016	2016 - 2017	2017 - 2018
Department		109	134	101	96



	2013 - 2014	2014 - 2015	2015 - 2016	2016 - 2017	2017 - 2018
Program		109	134	101	96



2017 - 2018 Fiscal Year Effectiveness Profile Report

Culinary Arts - CIP: 12.0503

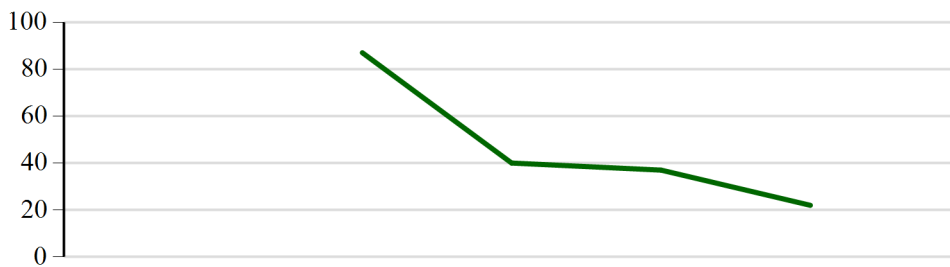
Unduplicated Credit Non-Cohort Headcount



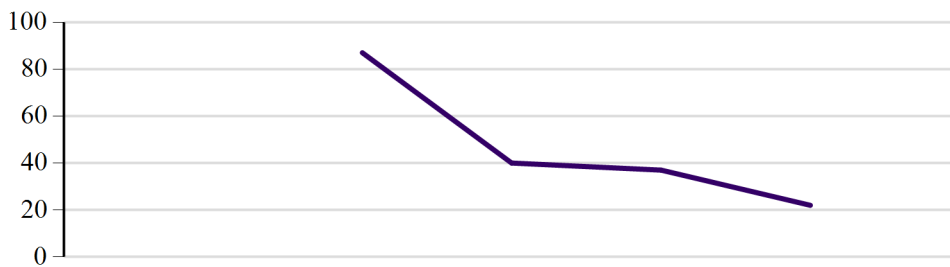
	2013 - 2014	2014 - 2015	2015 - 2016	2016 - 2017	2017 - 2018
Institution		1,606	1,461	1,639	1,680



	2013 - 2014	2014 - 2015	2015 - 2016	2016 - 2017	2017 - 2018
Division		132	59	49	41



	2013 - 2014	2014 - 2015	2015 - 2016	2016 - 2017	2017 - 2018
Department		87	40	37	22



	2013 - 2014	2014 - 2015	2015 - 2016	2016 - 2017	2017 - 2018
Program		87	40	37	22



2017 - 2018 Fiscal Year Effectiveness Profile Report

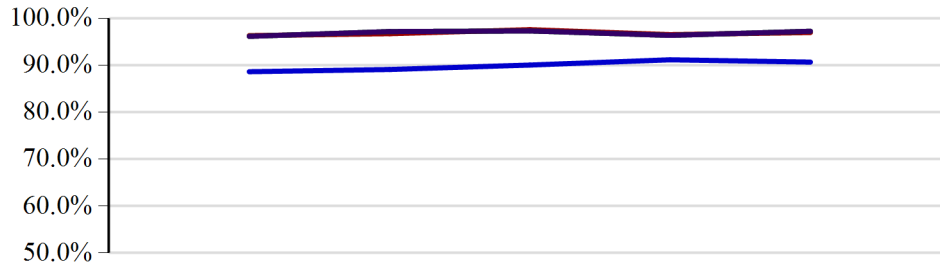
Culinary Arts - CIP: 12.0503

Academic Achievement (Based on MIS Fiscal Year and NCCBP)

Within Course

Retention Rate

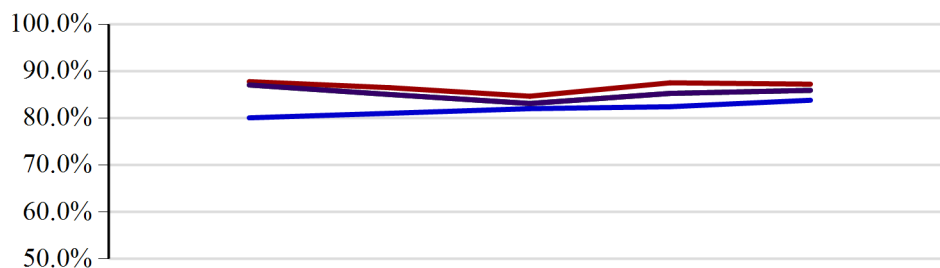
Count of A, A-, B+, B, B-, C+, C, C-, D+, D, D-, F, Q, P, O grades DIVIDED BY count of A, A-, B+, B, B-, C+, C, C-, D+, D, D-, F, Q, P, W, O grades



	2013 - 2014	2014 - 2015	2015 - 2016	2016 - 2017	2017 - 2018
■ Institution	88.6%	89.1%	90.0%	91.1%	90.6%
■ Division	96.3%	96.7%	97.6%	96.5%	97.0%
■ Department	96.1%	97.2%	97.3%	96.3%	97.2%
■ Program	96.1%	97.2%	97.3%	96.3%	97.2%

Completer Success Rate

Count of A, A-, B+, B, B-, C+, C, P grades DIVIDED BY count of A, A-, B+, B, B-, C+, C, C-, D+, D, D-, F, Q, P, O grades



	2013 - 2014	2014 - 2015	2015 - 2016	2016 - 2017	2017 - 2018
■ Institution	80.1%	81.0%	82.0%	82.4%	83.8%
■ Division	87.8%	86.5%	84.7%	87.5%	87.2%
■ Department	87.1%	85.0%	83.1%	85.3%	85.9%
■ Program	87.1%	85.0%	83.1%	85.3%	85.9%



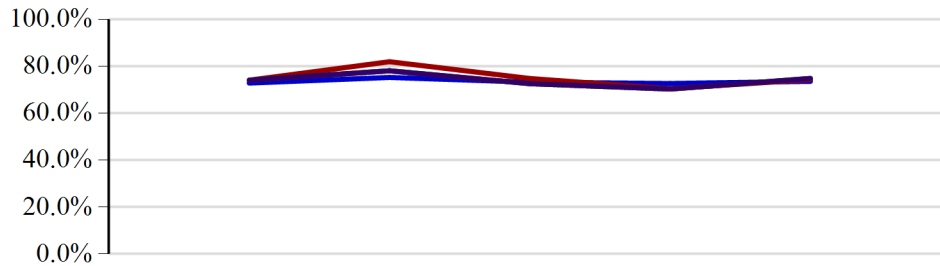
2017 - 2018 Fiscal Year Effectiveness Profile Report

Culinary Arts - CIP: 12.0503

Between Course

Fall-to-Spring Persistence Rate

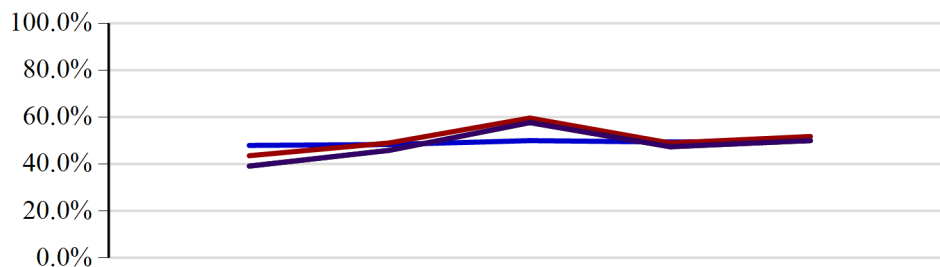
All students (excluding high school students) enrolled in Spring who were enrolled in Fall DIVIDED BY all students enrolled in Fall LESS those who did not return but who received an award by the end of Fall



	2013 - 2014	2014 - 2015	2015 - 2016	2016 - 2017	2017 - 2018
■ Institution	72.8%	75.2%	73.2%	72.6%	73.5%
■ Division	74.0%	81.9%	74.7%	70.4%	74.3%
■ Department	74.0%	78.0%	72.5%	70.2%	74.8%
■ Program	74.0%	78.0%	72.5%	70.2%	74.8%

Fall-to-Fall Persistence Rate

All students (excluding high school students) enrolled in current Fall who were enrolled in the previous Fall DIVIDED BY all students enrolled in previous Fall LESS those who did not return but who received an award by the end of the preceding Summer



	2013 - 2014	2014 - 2015	2015 - 2016	2016 - 2017	2017 - 2018
■ Institution	47.9%	48.3%	50.0%	49.4%	50.0%
■ Division	43.5%	49.0%	59.6%	49.0%	51.7%
■ Department	39.1%	45.9%	57.7%	47.4%	50.0%
■ Program	39.1%	45.9%	57.7%	47.4%	50.0%

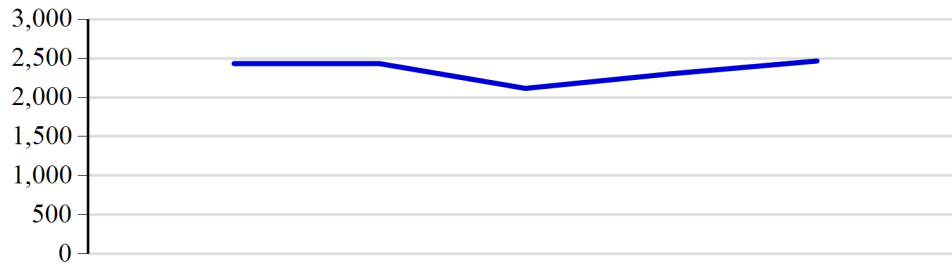


2017 - 2018 Fiscal Year Effectiveness Profile Report

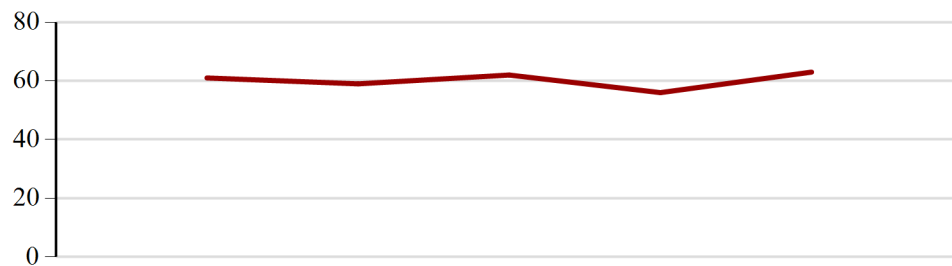
Culinary Arts - CIP: 12.0503

Graduation Outcomes (Based on IPEDS)

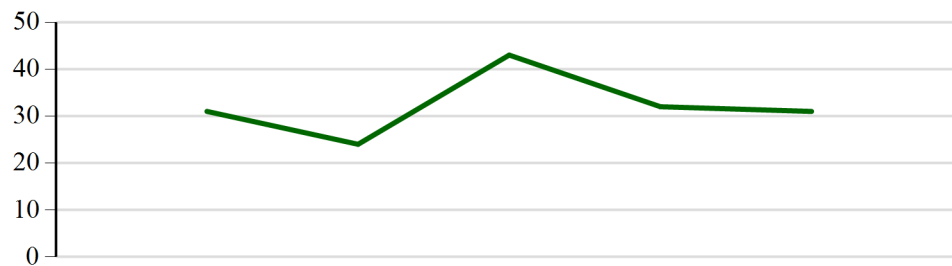
Award Count (Fiscal Year Completions)



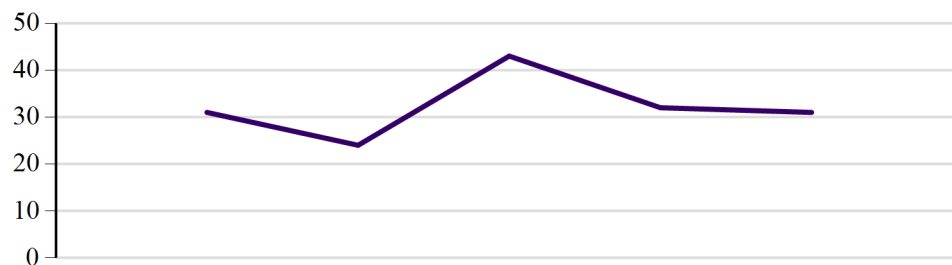
	2013 - 2014	2014 - 2015	2015 - 2016	2016 - 2017	2017 - 2018
■ Institution	2,433	2,432	2,116	2,303	2,466



	2013 - 2014	2014 - 2015	2015 - 2016	2016 - 2017	2017 - 2018
■ Division	61	59	62	56	63



	2013 - 2014	2014 - 2015	2015 - 2016	2016 - 2017	2017 - 2018
■ Department	31	24	43	32	31



	2013 - 2014	2014 - 2015	2015 - 2016	2016 - 2017	2017 - 2018
■ Program	31	24	43	32	31

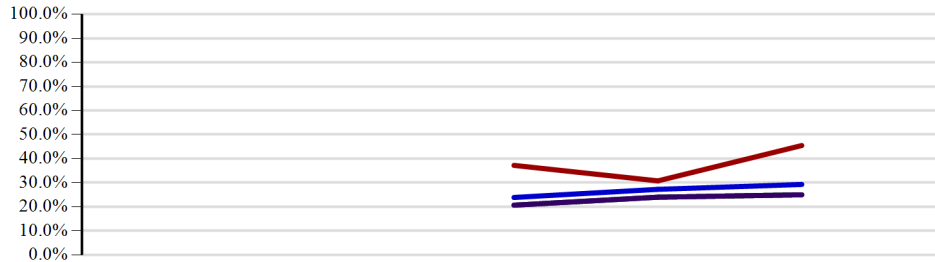


2017 - 2018 Fiscal Year Effectiveness Profile Report

Culinary Arts - CIP: 12.0503

150% Graduation Rate

Number of federal cohort students who received an award in 150% or less of the time anticipated to complete the award DIVIDED BY federal cohort LESS exclusions



	2013 - 2014	2014 - 2015	2015 - 2016	2016 - 2017	2017 - 2018
■ Institution			23.9%	27.3%	29.3%
■ Division			37.2%	30.8%	45.5%
■ Department			20.7%	24.0%	25.0%
■ Program			20.7%	24.0%	25.0%

150% Transfer without Graduation Rate

Number of federal cohort students who have not received an award and have transferred to another institution within 150% or less of the time to complete DIVIDED BY federal cohort less exclusions.



	2013 - 2014	2014 - 2015	2015 - 2016	2016 - 2017	2017 - 2018
■ Institution			8.4%	8.2%	9.9%
■ Division			0.0%	2.6%	0.0%
■ Department			0.0%	0.0%	0.0%
■ Program			0.0%	0.0%	0.0%

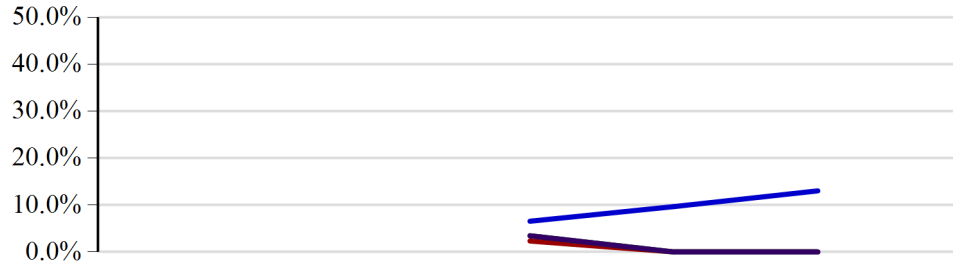


2017 - 2018 Fiscal Year Effectiveness Profile Report

Culinary Arts - CIP: 12.0503

150% Transfer with Graduation Rate

Number of federal cohort students who received an award and transferred to another institution within 150% or less of the time to complete the award DIVIDED BY federal cohort less exclusions.



	2013 - 2014	2014 - 2015	2015 - 2016	2016 - 2017	2017 - 2018
■ Institution			6.5%	9.7%	13.0%
■ Division			2.3%	0.0%	0.0%
■ Department			3.4%	0.0%	0.0%
■ Program			3.4%	0.0%	0.0%

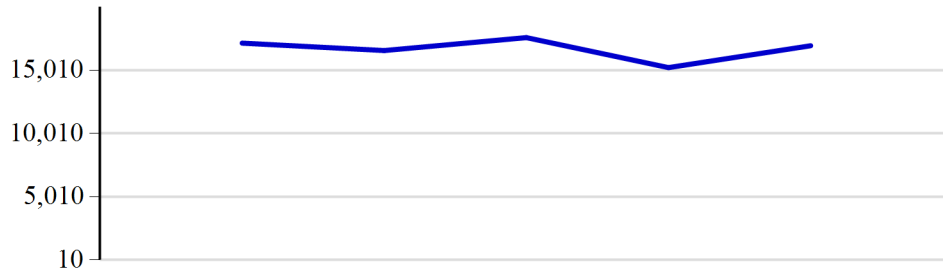


2017 - 2018 Fiscal Year Effectiveness Profile Report

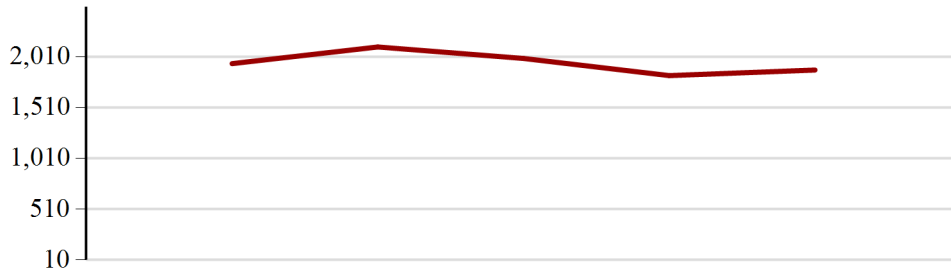
Culinary Arts - CIP: 12.0503

Employment (Based on annual EMSI data for 7-county region)

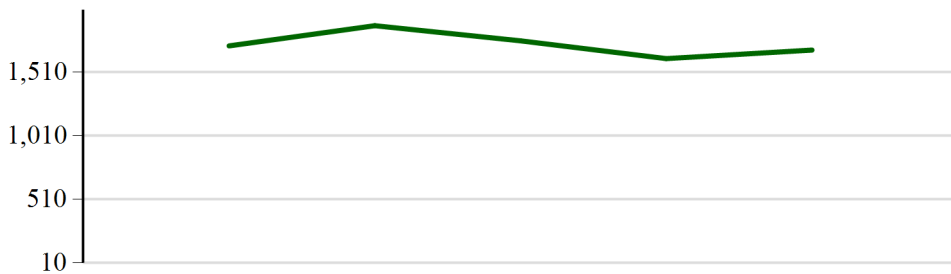
Annual Regional Job Openings



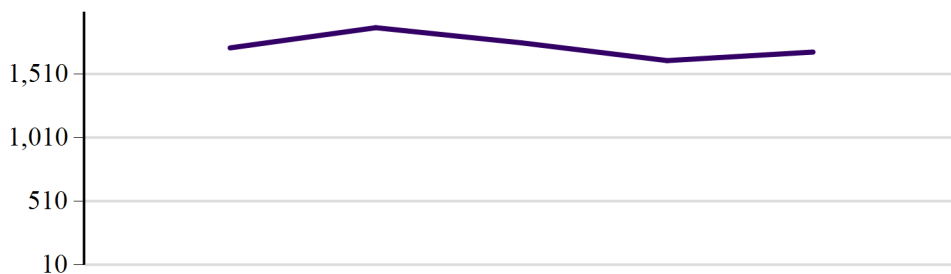
	2013 - 2014	2014 - 2015	2015 - 2016	2016 - 2017	2017 - 2018
■ Institution	17,147	16,562	17,585	15,213	16,941



	2013 - 2014	2014 - 2015	2015 - 2016	2016 - 2017	2017 - 2018
■ Division	1,943	2,107	1,994	1,825	1,880



	2013 - 2014	2014 - 2015	2015 - 2016	2016 - 2017	2017 - 2018
■ Department	1,718	1,877	1,758	1,618	1,685



	2013 - 2014	2014 - 2015	2015 - 2016	2016 - 2017	2017 - 2018
■ Program	1,718	1,877	1,758	1,618	1,685

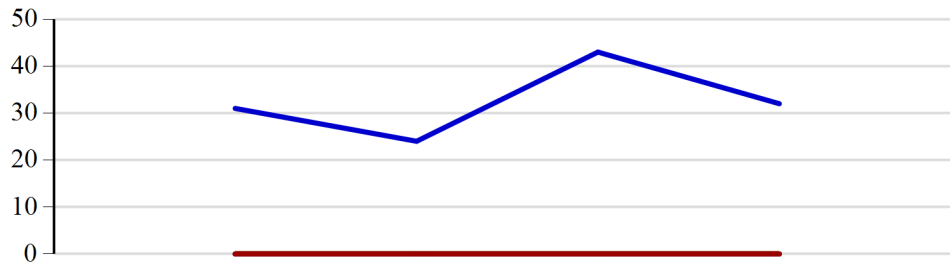


2017 - 2018 Fiscal Year Effectiveness Profile Report

Culinary Arts - CIP: 12.0503

Number of Regional Completers by Institution

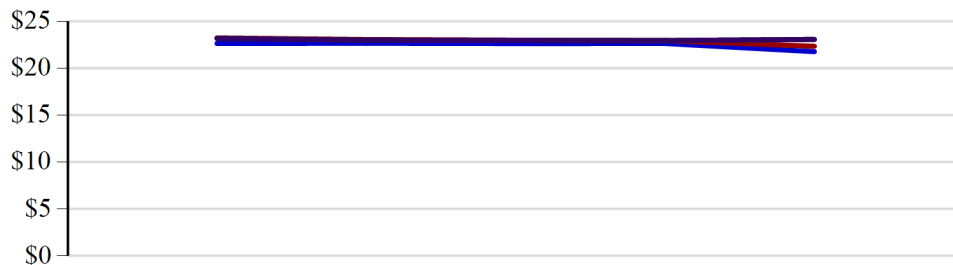
The number of awardees from programs with the same CIP by institutions in the region



	2013 - 2014	2014 - 2015	2015 - 2016	2016 - 2017	2017 - 2018
■ Kirkwood	31	24	43	32	
■ Coe	0	0	0	0	
■ Cornell	0	0	0	0	
■ Kaplan	0	0	0	0	
■ U of I	0	0	0	0	
■ Mt Mercy	0	0	0	0	

Average Median Regional Hourly Earnings

The sum of median regional hourly earnings of occupations in a category multiplied by the number of jobs in each corresponding occupation divided by the sum of the number of jobs for occupations in the category (i.e., weighted average)



	2013 - 2014	2014 - 2015	2015 - 2016	2016 - 2017	2017 - 2018
■ Institution	\$22.63	\$22.65	\$22.62	\$22.63	\$21.76
■ Division	\$23.22	\$23.05	\$22.98	\$22.94	\$22.33
■ Department	\$23.17	\$22.99	\$22.97	\$22.94	\$23.06
■ Program	\$23.17	\$22.99	\$22.97	\$22.94	\$23.06

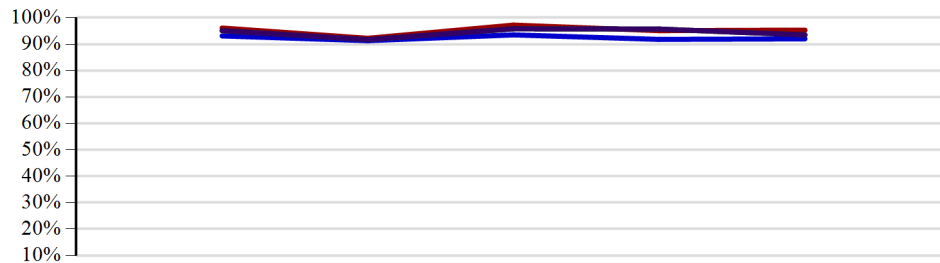


2017 - 2018 Fiscal Year Effectiveness Profile Report

Culinary Arts - CIP: 12.0503

Employment Rate (Based on IDOE and IWD Education Outcomes Report)

The number of program completers who did not continue their education and were matched to an unemployment insurance record one year after program completion DIVIDED BY All program completers who did not continue their education after program completion



	2013 - 2014	2014 - 2015	2015 - 2016	2016 - 2017	2017 - 2018
■ Institution	93.1%	91.3%	93.5%	91.8%	92.0%
■ Division	96.1%	92.2%	97.2%	95.1%	95.3%
■ Department	95.1%	91.7%	95.8%	95.7%	93.5%
■ Program	95.1%	91.7%	95.8%	95.7%	93.5%

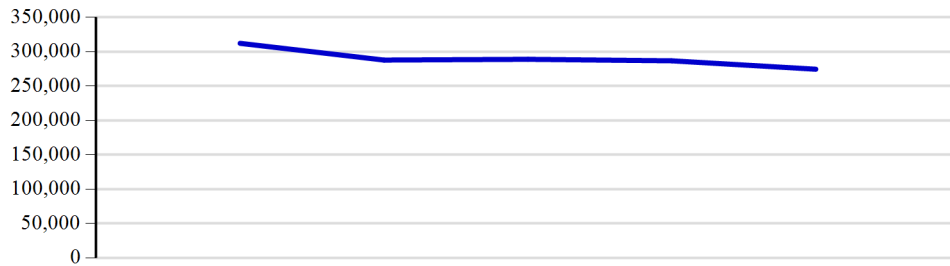


2017 - 2018 Fiscal Year Effectiveness Profile Report

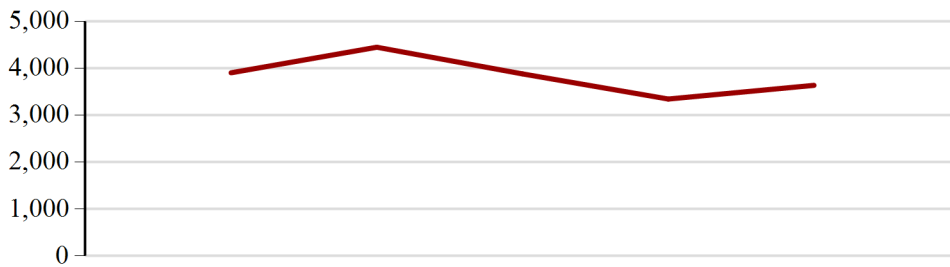
Culinary Arts - CIP: 12.0503

Resources (Based on Enrollments in MIS Fiscal Year Reporting)

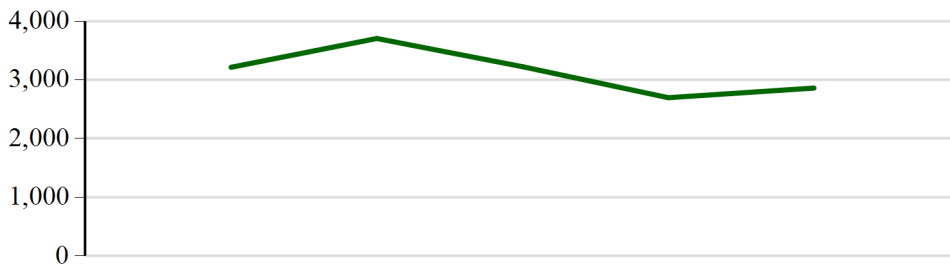
Number of Attempted Credit Hours



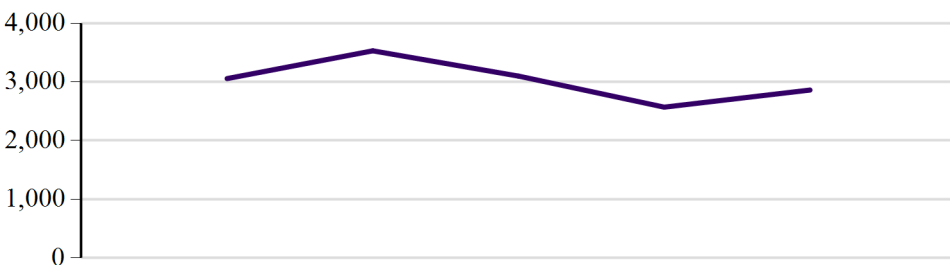
	2013 - 2014	2014 - 2015	2015 - 2016	2016 - 2017	2017 - 2018
■ Institution	311,998	287,679	288,782	286,566	274,406



	2013 - 2014	2014 - 2015	2015 - 2016	2016 - 2017	2017 - 2018
■ Division	3,901	4,446	3,878	3,342	3,634



	2013 - 2014	2014 - 2015	2015 - 2016	2016 - 2017	2017 - 2018
■ Department	3,215	3,706	3,225	2,697	2,861



	2013 - 2014	2014 - 2015	2015 - 2016	2016 - 2017	2017 - 2018
■ Program	3,056	3,530	3,099	2,569	2,861



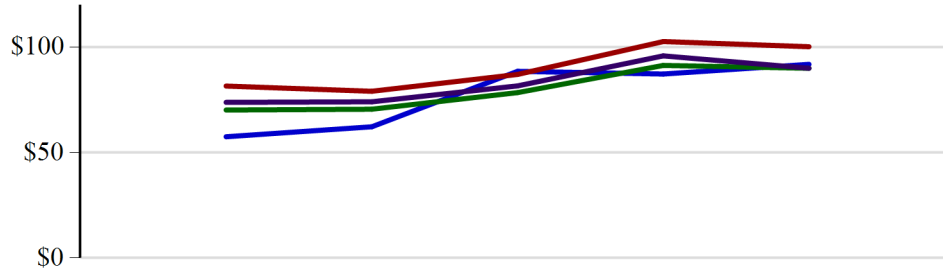
2017 - 2018 Fiscal Year Effectiveness Profile Report

Culinary Arts - CIP: 12.0503

Cost Per Credit Hour

Instructional Cost Per Attempted Credit Hour

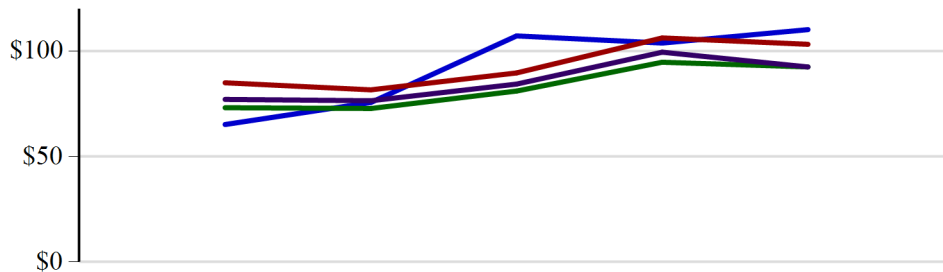
Number of credit hours of instruction provided TIMES Faculty Overload Credit Hour Rate DIVIDED BY number of student attempted credit hours



	2013 - 2014	2014 - 2015	2015 - 2016	2016 - 2017	2017 - 2018
■ Institution	\$57	\$62	\$88	\$87	\$91
■ Division	\$81	\$79	\$87	\$102	\$100
■ Department	\$70	\$70	\$78	\$91	\$90
■ Program	\$73	\$74	\$81	\$95	\$90

Instructional Cost Per Completed Credit Hour

Number of credit hours of instruction provided TIMES Faculty Overload Credit Hour Rate DIVIDED BY number of student completed credit hours



	2013 - 2014	2014 - 2015	2015 - 2016	2016 - 2017	2017 - 2018
■ Institution	\$65	\$75	\$107	\$103	\$110
■ Division	\$85	\$81	\$89	\$106	\$103
■ Department	\$73	\$72	\$81	\$94	\$92
■ Program	\$77	\$76	\$84	\$99	\$92

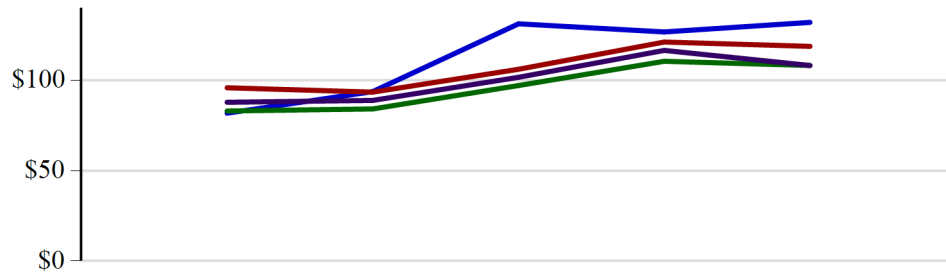


2017 - 2018 Fiscal Year Effectiveness Profile Report

Culinary Arts - CIP: 12.0503

Instructional Cost Per Successful Credit Hour

Number of credit hours of instruction provided TIMES Faculty Overload Credit Hour Rate
DIVIDED BY number of student successfully completed credit hours



	2013 - 2014	2014 - 2015	2015 - 2016	2016 - 2017	2017 - 2018
■ Institution	\$81	\$93	\$131	\$126	\$132
■ Division	\$95	\$93	\$106	\$121	\$118
■ Department	\$83	\$84	\$97	\$110	\$108
■ Program	\$87	\$88	\$101	\$116	\$108



2017 - 2018 Fiscal Year Effectiveness Profile Report

Culinary Arts - CIP: 12.0503

Glossary Terms

<u>150% Graduation Rate</u>	The percent of federal cohort students who receive an award in 150% of normal time to completion.
<u>Attempted Credit Hour</u>	Registrations through the census date of the course times the credit value of the course.
<u>Award</u>	A degree, diploma or certificate conferred to a student upon successful completion of a program of study.
<u>CIP</u>	Classification of Instructional Programs.
<u>Completed Credit Hour</u>	Registrations through the end date of the course times the credit value of the course.
<u>Completer Success Rate</u>	The percent of students who complete a course and receive a grade with a value of 2.0 or higher.
<u>Course</u>	A unit of instruction that has the following: a formalized syllabus; a description; a condensed outline or statement; a minimum of one contact hour (fifty minutes) in length; an approval in accordance with board policy; and an instructor of record.
<u>Credit Hour</u>	A unit of measure representing the equivalent of an hour (50 minutes) of instruction per week over the entire term. It is applied toward the total number of credit hours needed for completing the requirements of a degree, diploma, certificate, or other formal award. (per IPEDS Glossary https://nces.ed.gov/ipeds/glossary/?charindex=C)
<u>Department</u>	Next lower level from division of a hierarchy within Academic Affairs that consists of one or more similar programs within a division.
<u>Division</u>	A top level of a hierarchy within Academic Affairs headed by a dean (who may head one or more divisions).
<u>Enrollment</u>	Number of students registered for a course through its census date.
<u>Exclusions</u>	Individuals removed from the federal cohort due to death, permanent disability or military, church missions, or Peace Corp service.
<u>Fall-to-Fall Persistence Rate</u>	The percent of students enrolled in Fall who did not graduate and returned the following Fall.
<u>Fall-to-Spring Persistence Rate</u>	The percent of students enrolled in Fall who did not graduate and returned the following Spring.
<u>Federal Cohort</u>	(per IPEDS) all students who enter an institution as full-time, first-time degree or certificate-seeking undergraduate students during the fall term of a given year.
<u>Institution</u>	Kirkwood Community College.
<u>Instructional Cost</u>	Credit hour value of a section TIMES faculty overload credit hour rate.
<u>Persistence Rate</u>	The percent of students who did not graduate in the intervening time and continue enrollment from one term to another.
<u>Program</u>	Next lower level from department of a hierarchy within Academic Affairs defined by a single Federal CIP (Classification of Instructional Programs) number consisting of a collection of similar courses and one or more awards



2017 - 2018 Fiscal Year Effectiveness Profile Report

Culinary Arts - CIP: 12.0503

<u>Region</u>	The seven counties representing the majority of Kirkwood's district. (i.e., Benton, Cedar, Iowa, Johnson, Jones, Linn, and Washington counties)
<u>Retention Rate</u>	The percent of students registered through the census date of a course who complete the course.
<u>SOC</u>	Standard Occupational Classification.
<u>Successful Credit Hour</u>	Registrations through the end date of a course resulting in a grade value of 2.0 or greater times the credit value of the course.
<u>Transfer</u>	Subsequent enrollment in 4-year institution.