



# KIRKWOOD

EARN COLLEGE CREDIT IN HIGH SCHOOL



2024-2025 Programs of Study  
**IOWA COUNTY**

---

[www.kirkwood.edu/iowacounty](http://www.kirkwood.edu/iowacounty)

**Kirkwood**  
COMMUNITY COLLEGE

# Kirkwood

---

## COMMUNITY COLLEGE

Dear Students, Parents, and Counselors,

Kirkwood Community College is proud to collaborate with our local school districts, community partners, and local industry employers to offer state-of-the-art learning opportunities for students. At the Kirkwood Iowa County Center located in Williamsburg, our goal is to meet the needs of students and the community by offering a wide variety of educational opportunities and career experiences.

Kirkwood Iowa County is excited to offer college credit courses to students enrolled at our partner school districts (Belle Plaine, English Valleys, Hartwick-Ladora-Victor, Iowa Valley, and Williamsburg) through concurrent enrollment. Students can earn transferable college credit while exploring courses in a variety of fields. Concurrent credit opportunities include Kirkwood's Career Academies at our Iowa County Center and Kirkwood Regional Center at the University of Iowa in Coralville as well as courses offered onsite at our partner high schools, online, or on other Kirkwood campuses. Students can test the waters with one or two unrelated college-level courses, or complete one of our packaged Academy programs for career or interest-focused coursework. Students also earn high school credit necessary for their graduation requirements while taking these courses.

Kirkwood Iowa County offers students diverse learning opportunities and experience with hands-on, real world learning which uses cutting-edge equipment and state-of-the-art lab facilities. Kirkwood's programs prepare students for careers in high demand industries that require post-secondary training. These opportunities enable students to fast track their education at no cost to their families.

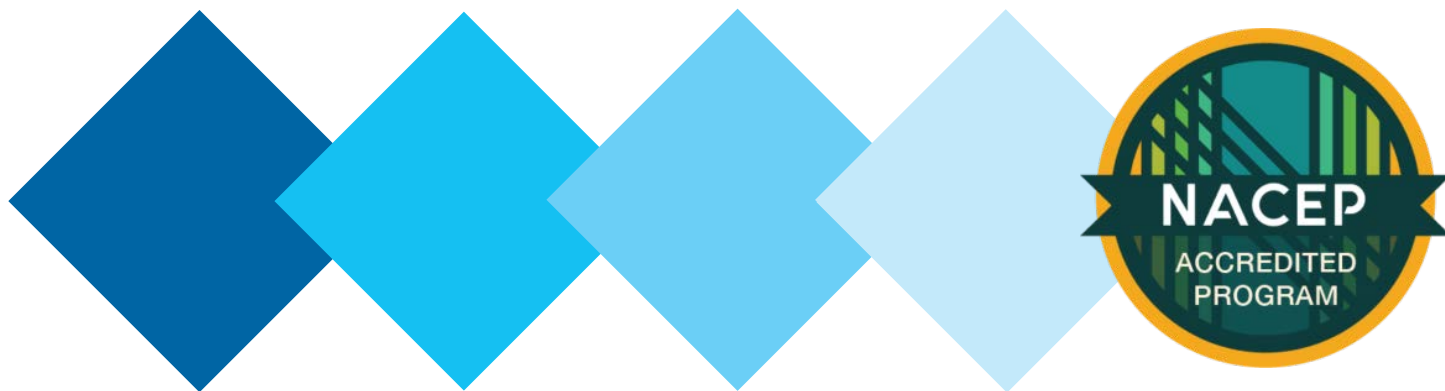
As students are planning their schedules and taking advantage of these opportunities, please do not hesitate to contact our office with any questions you may have. We recommend also discussing these options with your high school counselor's office. For additional information, including a complete listing of courses and programs, please visit our website. We look forward to working with you and your students as they begin to explore their interests and passions through the many opportunities offered at Kirkwood Community College.

**Kasey Keeling**

Director, Iowa County Center  
319-668-2461  
kasey.keeling@kirkwood.edu

**Michael Jacobsen**

Associate Director, Iowa County Center  
319-668-2461  
michael.jacobsen@kirkwood.edu



## WHY EARN CCHS? THE PROOF IS IN THE NUMBERS:

- ▶ **75.5% of CCHS students enroll in postsecondary education** the fall semester after their high school graduation – compared to 50.4% of non-CCHS students.
- ▶ On average, those CCHS students who do enroll in postsecondary education directly after high school are **15.4% less likely to drop out**.
- ▶ Within 8 years of their high school graduation, **87.5% of CCHS students have enrolled in postsecondary education** – compared to 67% of non-CCHS students.

*\*Statistics via research from the Iowa Department of Education*

## STUDENTS WHO ENTER COLLEGE HAVING ALREADY EARNED COLLEGE CREDIT IN HIGH SCHOOL:

- ▶ Earn higher grade point averages.
- ▶ Have higher retention rates.
- ▶ Experience higher graduation rates.
- ▶ Graduate in less time.
- ▶ Change majors less often.
- ▶ Add minors and second majors more often.

*\*Compared to students who have not earned college credit in high school  
Statistics via research from Iowa State University*

The logo for Kirkwood Community College is located on the right side of the page. It features a large blue diamond shape. Inside the diamond, the word "Kirkwood" is written in a large, white, serif font, and "COMMUNITY COLLEGE" is written in a smaller, white, sans-serif font below it. To the right of the diamond, there is a smaller, light blue diamond shape and a larger, light blue triangle pointing upwards.

Kirkwood  
COMMUNITY COLLEGE

## Eligibility, Admission and Enrollment Information

### College Credit in High School (CCHS) — Concurrent Enrollment at Kirkwood Community College

Kirkwood partners with local high schools to offer concurrent enrollment course work that meets the needs of students looking to explore a specific career and technical program at Kirkwood, as well as transfer-level general education course work to enhance any major. Students enrolled in a concurrent enrollment course earn both high school and college credit for the course.

High school faculty who meet community college faculty credentials are recognized as adjunct faculty, and adhere to the approved Kirkwood syllabus.

As defined by the Iowa Department of Education, Senior Year Plus (SYP) is an important part of high school reform efforts. Through these programs, students are provided rigorous opportunities for advanced learning.

To this end, Kirkwood partners with area school districts to prepare students to learn essential skills and earn college credit through a variety of concurrent enrollment options. Iowa law requires students, instructors, and institutions to meet certain criteria to be eligible to participate in SYP programming.

To participate, students must:

- Satisfy Kirkwood Community College prerequisites, which may include a satisfactory placement score or GPA for reading, writing, and math, indicated by the college's recognized placement exams.
- Complete "College Credit in High School" application for admission at: [www.kirkwood.edu/cchsapPLY](http://www.kirkwood.edu/cchsapPLY)
- Please note that restrictions on participation in Senior Year Plus opportunities cannot be placed by the district. Examples include:
  - Districts may not require to exhaust district curriculum prior to enrollment in SYP courses
  - Districts may not limit a student to one course per semester
  - Districts can't limit the number of courses a student can take in an academic year; however, Kirkwood does limit to 18 credit hours per semester – anything more requires dean approval.
  - Districts may not limit the format in which a class can be taken.

### Arts and Science Coursework

- To participate in liberal arts courses, students must demonstrate proficiency in each of the three academic areas – math, science, and reading, as indicated by Iowa Assessment Testing or an alternative measure of proficiency adopted by the school board. Alternative measures of proficiency may vary by school district. Students must also satisfy Kirkwood Community College prerequisites as needed.

### Career Academy Coursework

- Participation in career and technical courses is not based on proficiency of Iowa Assessment Testing. Students will need to satisfy Kirkwood Community College's prerequisites as needed.

Additional information on Senior Year Plus guidance can be found at:

[www.educateiowa.gov/adult-career-and-community-college/senioryear-plus-syp](http://www.educateiowa.gov/adult-career-and-community-college/senioryear-plus-syp)

## Concurrent Enrollment Format Definitions

1. Onsite: concurrent enrollment at the high school, most often taught by a high school paid instructor. Onsite sections are created and dedicated to high school students. In rare cases, courses are offered at a Kirkwood-provided location outside of the high school, but for enrollment and billing purposes are treated as onsite sections. Some exceptions may apply.
2. Alternative Concurrent Enrollment: high school students join an existing traditionally offered college class. In Alternative Concurrent Enrollment, concurrent enrollment students will be taking the course with a Kirkwood paid instructor. These courses are not dedicated to high school students, but are college courses high school students are eligible to join along with degree seeking students; many of these courses are offered online or at Kirkwood's Main Campus.
3. Regional Center Courses: shared career academy programming at a Kirkwood location. These are courses dedicated to high school students and occur at one of four regional centers: Jones County Regional Center in Monticello; Kirkwood Center at the University of Iowa in Coralville, Linn County Regional Center in Hiawatha, or Washington County Regional Center in Washington.

## Enrollment and Registration Process for Concurrent Enrollment Students

- 1) Student expresses interest in enrolling in concurrent enrollment.
- 2) Student creates official Kirkwood record at [www.kirkwood.edu/cchscopy](http://www.kirkwood.edu/cchscopy). Students must create an account and then complete the entire application for submission.
- 3) Within two business days, the student will receive an email indicating that the application has been processed. The email will contain instructions on how the student can log back into their account and view their formal welcome letter. The letter will contain the student's unique identification number, also known as a **k-number**. This identifier is to be used in place of the SSN, and it will not change.
- 4) Students will then need to set up their official Kirkwood account using their knumber and establishing a password ([www.kirkwood.edu/setup](http://www.kirkwood.edu/setup)). Please note that this is a different process than what establishing a profile for the application process (see more information below).
- 5) Student will need to complete any required placement exam, or submit necessary GPA if required for individual course prerequisites as identified by the course catalog.
- 6) After the subsequent steps have been completed, students can enroll in concurrent enrollment courses through Dual Enroll. Students will need their knumber and password to login to [Kirkwood.dualenroll.com](http://Kirkwood.dualenroll.com). After creating a basic profile, students can select the appropriate term to register for future classes. After student has selected and submitted their desired courses, the selections will go to the high school and Kirkwood for final approvals. If the registration is not processed or approved for any reason, the student should receive notification in their Kirkwood email.  
**NOTE: Students who do not register through Dual Enroll will be considered self-pay students and will be responsible for their own tuition. Students who register through Dual Enroll and have the approval of the school district will have their tuition costs covered by the school district.**
- 7) For any questions, county and regional centers are available to help students through the application and registration process at any time. Please see final page for contact information.

## Awarding of Credits/Grades

**High School Credit:** Students with a passing grade will receive credit from their high school. Individual school districts determine whether the high school credit will be awarded to meet high school core curriculum requirements or elective requirements.

**College Credit:** Students will receive college credit from Kirkwood Community College. An official college transcript will be created and the grade earned will be reflected on the student's official college transcript.

**Transferring Credit:** Students not planning to attend Kirkwood after high school graduation should plan to include their official college transcript as part of their application to other colleges and universities. Students can request a copy of their transcript at <https://www.kirkwood.edu/transcript> or by logging into MyHub. Kirkwood strives to ensure that academic level courses transfer to other institutions and has transfer agreements with many state universities and colleges. If a student plans to attend a private college or an institution out-of-state, please contact the college directly to determine how credits earned will transfer.

## RAI Scores

Iowa's three Regent universities assign a Regent Admission Index (RAI) score based on test scores, class rank, GPA, and the number of core courses you've completed. Some of these classes may factor into your RAI. For more information, visit <http://www.regents.iowa.gov/RAI>.

## Note to Parents/Guardians of Academy Students

Through the Family Educational Rights and Privacy Act (FERPA), colleges are bound by law to keep student records confidential. Therefore, communication from Kirkwood will go directly to the student. You are encouraged to keep open lines of communication with your student. Some helpful tips:

- Most faculty use a class management tool called Talon. Your students should be able to log into their Talon account for the class and show you any assignment, grade, or attendance that the instructor had tracked for them.
- Midterm grades or pass/fail indicators are given each semester. Your student should be able to log into their MyHub account and show you their midterm grade.
- Work through the high school counselor when you have a concern. Our Kirkwood partnership allows us to stay in open contact with the school district since concurrent enrollment classes are offered for high school and college credit.
- In some instances, students may choose to release FERPA information. Contact our office for more information on this process.

# CAREER ACADEMY

## Advanced Manufacturing and Welding

### MANUFACTURING, TRADES, AND TRANSPORTATION

The future of advanced manufacturing is exploding. Machines are getting smarter, the demand for products is increasing and the time we need to develop them is decreasing. Our region needs young professionals like you to design, program, operate, and maintain this technology. Taught by industry experts, this Career Academy experience can position you to be a leader in the growing world of manufacturing, robotics, and welding.

**Available at:** Williamsburg High School

**Available to:** Belle Plaine, English Valleys, HLV, Iowa Valley, and Williamsburg High Schools.



COURSE NAME	COURSE NUMBER	CREDITS
Introduction to Welding, Safety, and Health of Welders	<a href="#">WEL-228</a>	3
Gas Metal Arc Welding Short Circuit Transfer	<a href="#">WEL-244</a>	3
Introduction to Engineering Design	<a href="#">EGT-400</a>	3
Gas Tungsten Arc Welding for Carbon Steel	<a href="#">WEL-251</a>	3

**Total Tuition Cost Savings: \$2,400**



# CAREER ACADEMY

## Agriculture Science

### ANIMALS, FOOD, AND LAND

Ready to take your passion for agriculture to the next level? Our Agriculture Science academy experience offers everything you need to succeed in this dynamic and growing industry – from class lectures and discussions led by experienced professionals, to hands-on activities that will give you a real taste of what it's like to work in agriculture. Whether you're looking to start your own farm, become a research scientist, or work in policy or education, this is the perfect way to jump start your future in agriculture.

**Available at:** Belle Plaine, Iowa Valley, and Williamsburg High Schools.

**Available to:** Belle Plaine, English Valleys, HLV, Iowa Valley, and Williamsburg High Schools.



COURSE NAME	COURSE NUMBER	CREDITS
Principles of Agronomy	<a href="#">AGA-114</a>	3
Survey of the Animal Industry	<a href="#">AGS-113</a>	3
Principles of Horticulture	<a href="#">AGH-221</a>	3

**Total Tuition Cost Savings: \$1,260+**

*\*Courses vary by location, students are asked to complete at least 2 courses*



# CAREER ACADEMY

## Arts & Sciences

### ARTS AND DESIGN

Study in the Liberal Arts provides an opportunity to explore multiple perspectives, develop in-depth critical thinking, and broaden your knowledge across a variety of disciplines and interest areas.

**Available at:** Belle Plaine, English Valleys, HLV, Iowa Valley, Kirkwood Iowa County Center, online, and/or Williamsburg High Schools.



#### COURSE INFORMATION

Participating students can earn **12 or more credit hours** in Arts & Sciences credits, through various included career academy courses – Academy of Innovation and Management (AIM), Criminal Justice Academy, and Education Academy courses are included.

CTE courses are not included.

The following additional courses are offered **onsite at Kirkwood's Iowa County Center**:

COURSE NAME	COURSE NUMBER	TERM/DAY	CREDITS
Introduction to Sociology	<a href="#">SOC-110</a>	FALL/M-Th	3
Introduction to Criminal Justice	<a href="#">CRJ-100</a>	FALL/M-Th	3
Composition I	<a href="#">ENG-105</a>	FALL/T,Th, Every Other M	3
Composition II	<a href="#">ENG-106</a>	SPRING/T,Th, Every Other M	3
Cultural Anthropology	<a href="#">ANT-105</a>	SPRING/TBD	3

**Total Tuition Cost Savings: \$2,520**

# CAREER ACADEMY

## Criminal Justice

### SOCIAL SERVICES, SAFETY, AND EDUCATION

Put your passion for helping others to work. Whether it's learning how to take on the complexity of other human beings and addressing social issues, or understanding the American justice system in a way that helps you serve and protect local communities, this academy experience will lead you to a rewarding career making a positive impact on others' well-being.

**Available at:** the Kirkwood Iowa County Center (and online)

**Available to:** Belle Plaine, English Valleys, HLV, Iowa Valley, and Williamsburg High Schools



COURSE NAME	COURSE NUMBER	CREDITS
Introduction to Sociology	<a href="#">SOC-110</a>	3
Introduction to Criminal Justice	<a href="#">CRJ-100</a>	3

**Total Tuition Cost Savings: \$1,260**

# CAREER ACADEMY

## Education

### SOCIAL SERVICES, SAFETY, AND EDUCATION

The mind is a muscle. And like any muscle, it needs to be honed and trained in order to perform at its best. That's where our Education academy offering comes in. We're here to mold the minds of future teachers and educators, harnessing their interest and helping them develop into the best possible version of themselves. We're dedicated to helping our students reach their full potential, so our curriculum is designed to challenge and engage, preparing our students for a successful future in education.

**Available at:** Belle Plaine, English Valleys, HLV, Iowa Valley, and Williamsburg High Schools (and online)

**Available to:** Belle Plaine, English Valleys, HLV, Iowa Valley, and Williamsburg High Schools



COURSE NAME	COURSE NUMBER	CREDITS
Exploring Teaching	<a href="#">EDU-110</a>	3
Introduction to Sociology	<a href="#">SOC-110</a>	3
Introduction to Psychology	<a href="#">PSY-111</a>	3
Developmental Psychology	<a href="#">PSY-121</a>	3

**Total Tuition Cost Savings: \$2,520**

*\*Course format may vary by location*

# CAREER ACADEMY

## Engineering: Project Lead The Way (PLTW)

### MANUFACTURING, TRADES, AND TRANSPORTATION

Learn how to build the future you've dreamed of in our Engineering academy experience. With knowledgeable and experienced instructors, you'll receive an education that's second to none. In addition to academic coursework, this program offers hands-on training in state-of-the-art facilities with the latest industry tools and equipment. Complete unique, real-world projects with classmates and set yourself up for an exciting career as an engineer.

**Available at:** Williamsburg High School

**Available to:** Belle Plaine, English Valleys, HLV, Iowa Valley, and Williamsburg High Schools



COURSE NAME	COURSE NUMBER	CREDITS
Introduction to Engineering Design	<a href="#">EGT-400</a>	3
Principles of Engineering	<a href="#">EGT-410</a>	3
Civil Engineering and Architecture	<a href="#">EGT-460</a>	3
Computer-Integrated Manufacturing	<a href="#">EGT-450</a>	3

**Total Tuition Cost Savings: \$2,520**

## CAREER ACADEMY

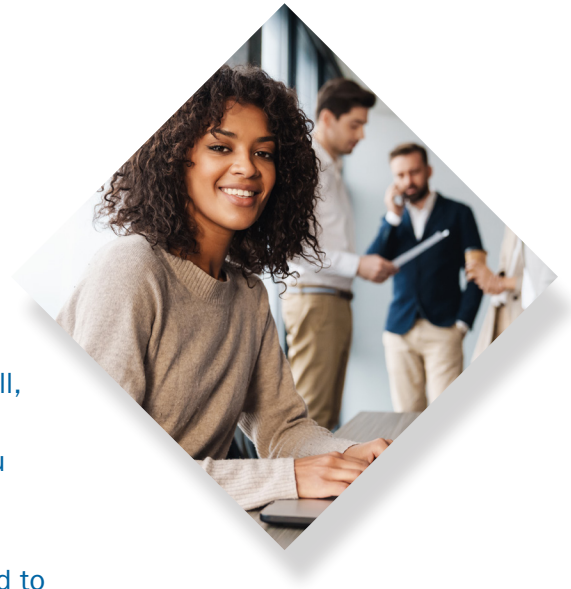
# Innovation & Management

## BUSINESS

There's a lot to learn in business school, but that's a good thing! After all, knowledge is power. And with our business-focused Innovation & Management offering, you'll be armed with the skills and information you need to excel in any business venture. Whether you're interested in marketing, finance and accounting, economics, or managing peers and coworkers, this experience gives you the competitive advantage you need to get ahead in today's business world.

**Available at:** Iowa County Center (and online)

**Available to:** Belle Plaine, English Valleys, HLV, Iowa Valley, and Williamsburg High Schools



COURSE NAME	COURSE NUMBER	CREDITS
Introduction to Business	<a href="#">BUS-102</a>	3
Introduction to Entrepreneurship	<a href="#">MGT-300</a>	3

**Total Tuition Cost Savings: \$1,260**

# CAREER ACADEMY

## Patient Care Exploration

### HEALTH AND WELLNESS

The Patient Care Academy is a great fit for students who are passionate about caring for others and want to make a difference in people's lives. You'll explore everything from anatomy and physiology to psychology and communication, learning how to work effectively with patients of all ages and backgrounds. By the end of the program, you'll have a strong foundation in patient care that will prepare you for whatever path you choose to pursue. Whether you're interested in becoming a doctor, nurse, or any other type of medical professional, this experience is an excellent first step on your journey.

**Available at:** Marengo Public Library

**Available to:** Belle Plaine, English Valleys, HLV, Iowa Valley, and Williamsburg High Schools



COURSE NAME	COURSE NUMBER	CREDITS
Explorations of Healthcare Careers (online)	<a href="#">HSC-107</a>	2
Nurse Aide	<a href="#">HSC-168</a>	3.5
Medical Terminology (online)	<a href="#">HSC-115</a>	3
Professionals in Health (online)	<a href="#">HSC-205</a>	3

### Total Tuition Cost Savings: \$2,415

*Students must be 16 prior to the first day of their scheduled Nurse Aide course. Completion of high school biology within the last two years, with a grade of C or higher is recommended. Students must obtain 79 or higher in the Nurse Aide course to move on to clinical experience. There are no excused absences for Nurse Aide, per state regulations. Students must arrange their own transportation to clinical experience and be prepared for time commitment outside of academy class to complete the clinic requirements. Health immunization requirements (\*if applicable) are shared with students at orientation and must be completed prior to the first day of the scheduled Nurse Aide course.*

# CAREER ACADEMY

## Software Specialist

### STEM AND IT

There's not much we can say that hasn't already been said about the impact technology has on our daily lives. It's also safe to say that technology will have an even bigger impact on our future. Put yourself at the center of that impact with an innovative curriculum that is constantly evolving to keep up with the latest industry trends. In our Technology academy, you'll learn about all things IT, coding, web and computer programming, and a modern tech industry that's headed for the moon. Strap in!

**Available at:** Belle Plaine, English Valleys, HLV, Iowa Valley, and Williamsburg High Schools (and online)

**Available to:** Belle Plaine, English Valleys, HLV, Iowa Valley, and Williamsburg High Schools (and online)



COURSE NAME	COURSE NUMBER	CREDITS
Emerging Technology Trends (online)	<a href="#">BCA-179</a>	3
Information Computing (online)	<a href="#">CSC-116</a>	3

**Total Tuition Cost Savings: \$1,260**

*\*Courses vary by location, students are asked to complete at least 2 courses*



# CAREER ACADEMY

## Welding

### MANUFACTURING, TRADES, AND TRANSPORTATION

Get on the fast track to a career-ready degree in welding. Join passionate, certified instructors from one of the top weld-testing and instructional colleges in the country as you learn on top-of-the-line technology and equipment, including virtual reality welding.

**Available at:** Williamsburg High School

**Available to:** Belle Plaine, English Valleys, HLV, Iowa Valley, and Williamsburg High Schools



COURSE NAME	COURSE NUMBER	CREDITS
Introduction to Welding, Safety, and Health of Welders	<a href="#">WEL-228</a>	1
Gas Metal Arc Welding Short Circuit Transfer	<a href="#">WEL-244</a>	2
Introduction to Fabrication	<a href="#">WEL-208</a>	2
Gas Metal Arc Welding Spray Transfer	<a href="#">WEL-245</a>	2
Gas Tungsten Arc Welding for Carbon Steel	<a href="#">WEL-251</a>	2

**Total Tuition Cost Savings: \$1,890**

# HOW TO GET STARTED

## Helpful Links

- ▶ **Complete your College Credit in High School (CCHS) Application**

[www.kirkwood.edu/cchsapply](http://www.kirkwood.edu/cchsapply)

- ▶ **Setup your k-number and password**

[www.kirkwood.edu/setup](http://www.kirkwood.edu/setup)

- ▶ **Forgot your k-number and password?**

[www.kirkwood.edu/knumber](http://www.kirkwood.edu/knumber)

[www.kirkwood.edu/password](http://www.kirkwood.edu/password)

- ▶ **Register for your classes**

[kirkwood.dualenroll.com](http://kirkwood.dualenroll.com)

- ▶ **Complete Orientation**

[www.kirkwood.edu/talon](http://www.kirkwood.edu/talon)

Click the course titled College Credit in High School Orientation – all regional center locations have in-person orientation requirements.

- ▶ **Access your course(s) in TALON**

[www.kirkwood.edu/talon](http://www.kirkwood.edu/talon)

Click your specific course title.



*Kirkwood Community College shall not engage in nor allow unlawful discrimination against individuals involved in its educational programs and activities on the basis of race, creed, color, sex, sexual orientation, gender identity, national origin, religion, age, disability, or actual or potential parental, family, or marital status. If you have questions or complaints related to compliance with the policy, please contact the Vice President of Human Resources at Kirkwood Community College, 313 Kirkwood Hall, 6301 Kirkwood Blvd. SW, Cedar Rapids, IA 52404, Telephone: 319-398-5572, Email: [equity@kirkwood.edu](mailto:equity@kirkwood.edu), or the Director of the Office for Civil Rights U.S. Department of Education, John C. Kluczynski Federal Building, 230 S. Dearborn Street, 37th Floor, Chicago, IL 60604-7204, Telephone: 312-730-1560, Fax: 312-730-1576, Email: [OCR.Chicago@ed.gov](mailto:OCR.Chicago@ed.gov).*